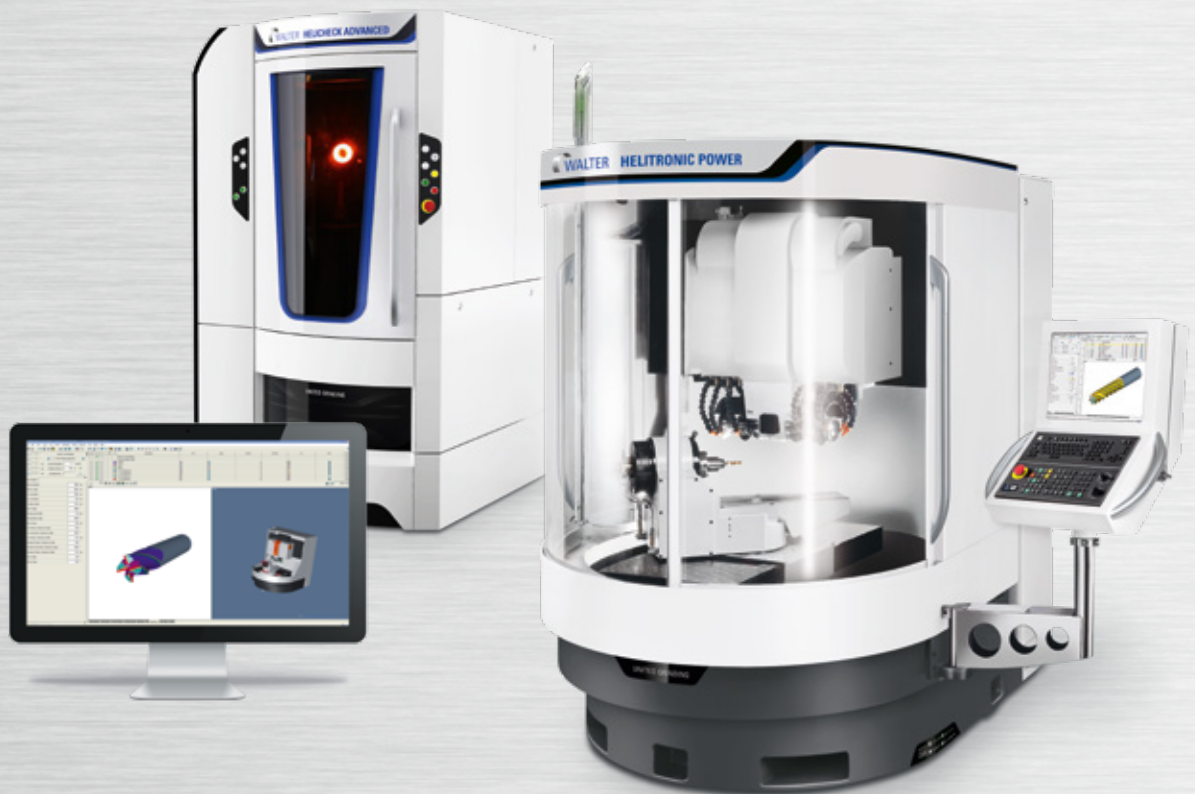


WALTER INFO 16/2018

HELINET ECO/PRO GRINDING NETWORK

Maximum effectiveness and productivity with
the network for HELITRONIC and HELICHECK



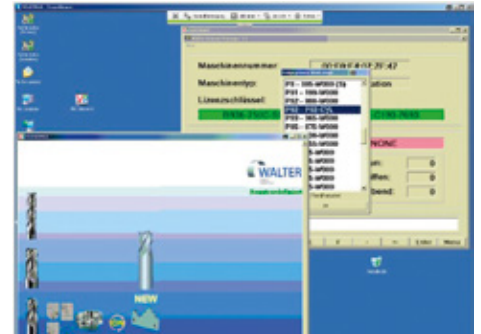
Benefits

The linking of WALTER tool grinding and measuring machines with Helinet ECO/PRO offers numerous advantages for production: simply structured tool administration, regular automatic data back-up and simple real-time remote maintenance. This all adds up to greater productivity and precision in production or regrinding operations.



Optimizing data handling and data security for HELITRONIC and HELICHECK

- Central IDN management
- Integrated data backup concept
- Fast support via remote desktop
- Increased efficiency and productivity
- Intelligent and flexible hardware design with industry-standard components



IDN handling for the entire machine

Optimize your work processes with flexible, fast transfer of ID numbers. All Helitronic series machine types from the HMC 500 control unit upward and all WALTER measuring machines are network-capable.

Data security on the network

Whether individually, via your company network or an external file server, automatic back-ups save the defined data centrally, regularly and reliably.

Service & application support via Teamviewer and VNC

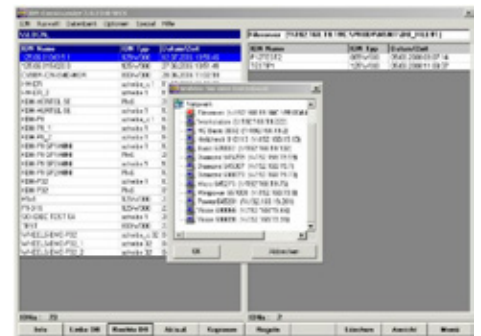
We use modern IT know-how for your benefit: a secure Internet connection to your network enables fast and easy remote diagnostics for your machines. You control the access by providing IDs and passwords via Teamviewer.

Network options

Make your network even more powerful by integrating our FTC software. Together with a WALTER measuring machine, this allows on-line compensation for tool geometry. Software package P199 allows you to send grinding wheel data from the measuring machine to the grinding machine. The network-integrated PC workstations significantly increase the availability of the grinding machines.

Network hardware

Before installation, we work with you to define the hardware, file server, transfer media and switches that meet your wishes and requirements. Our network documentation completes the commissioning and introduction to the system.



Please contact us for further information:

Walter Maschinenbau GmbH
Jopestr. 5 · 72072 Tübingen, Germany
Tel. +49 7071 9393-0 · Fax +49 7071 9393-695
info@walter-machines.com

